

901 South US Route 23

Fostoria, OH 44830
(Seneca County)



Property specifications

- Total building: +/- 316,000 SF
- Clear height: 16'+
- Year built: 1963 with additions in 1970 & 1976
- Site size: 47.381 Acres
- Zoning: Industrial - Foundries & Heavy Manufacturing
- Construction: Pre-case concrete over structural steel
- Asking price: \$6,500,000
- Taxes: \$160,308.14 (annually)

Contacts

Chris Clayton
+1 216 937 4382
chris.clayton@am.jll.com

Dan Wendorf
+1 614 460 4407
dan.wendorf@am.jll.com

Building specification

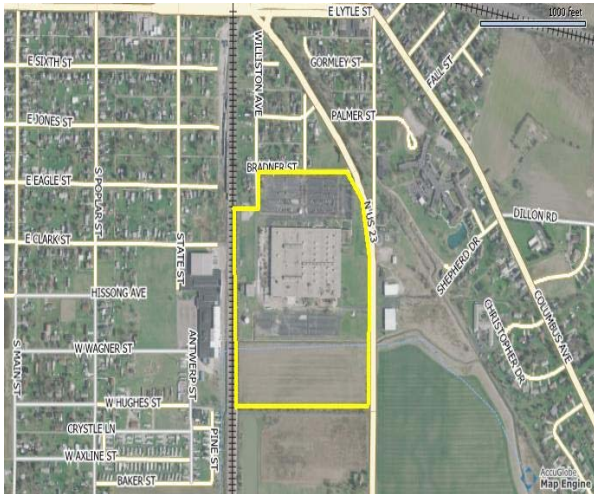
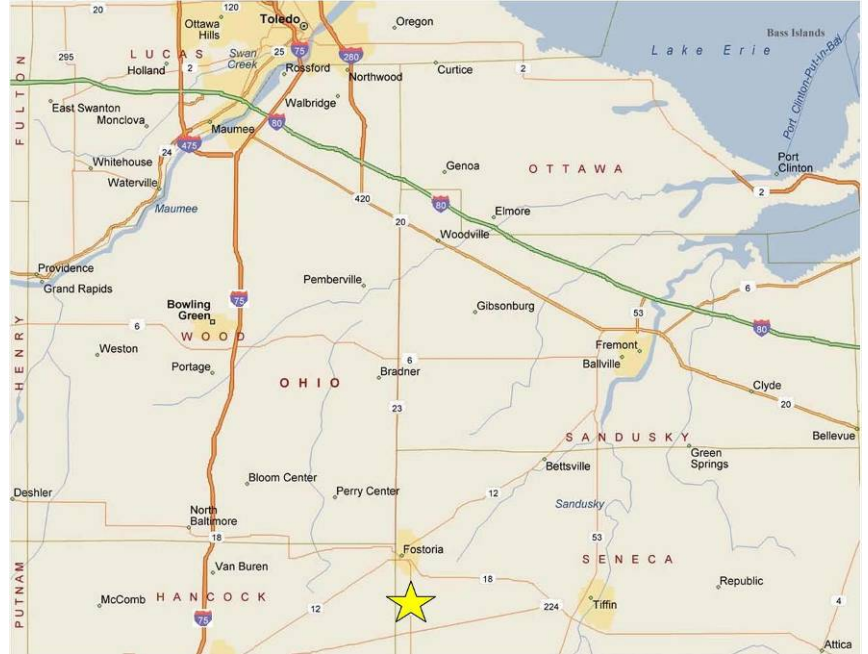
- Rentable Area: +/- 316,000 SF
- Office: +/- 9,000
- Power: Three (3) 1500 KVA transformers
- Loading: Two (2) Docks, Six (6) Drive-ins
- Parking: 500+ spaces
- Sprinkler system: Wet
- HVAC: 100% air conditioned
- Column spacing: 60' w x 20'd
- Roof: Newer roof 2001-02 w/ 25yr. guarantee
- Floors: 8"-10" reinforced
- Lighting: 80% high-pressure sodium, 20% fluorescent

©2008 Jones Lang LaSalle IP, Inc. All rights reserved. All information contained herein is from sources deemed reliable; however, no representation or warranty is made to the accuracy thereof.

901 South US Route 23
Fostoria, OH 44830
(Seneca County)

Location highlights

- Interstate access: Located on Rt. 23;
Approx. 15 miles to I-75
- Rail access: CSX along property
- Other highways: I-90/80 approx. 25 Miles
- County population: 58,563
- County unemployment rate: 8%



Contacts

Chris Clayton
+1 216 937 4382
chris.clayton@am.jll.com

Dan Wendorf
+1 614 460 4407
dan.wendorf@am.jll.com

©2008 Jones Lang LaSalle IP, Inc. All rights reserved. All information contained herein is from sources deemed reliable; however, no representation or warranty is made to the accuracy thereof.